

Building C

As our most versatile and popular facility, Building C has been home to conventions, banquets, trade and consumer shows, dances, and sporting events. With 28,000 square feet, two roll-up doors, restrooms, and a promoter's office, its adaptability has proven indispensable time and time again for a wide range of events, including Discover the Dinosaurs, the Event Train Show, and the Quilt, Craft + Sewing Festival. Building C can be used on its own or in conjunction with Building D, for a total of 48,000 square feet.

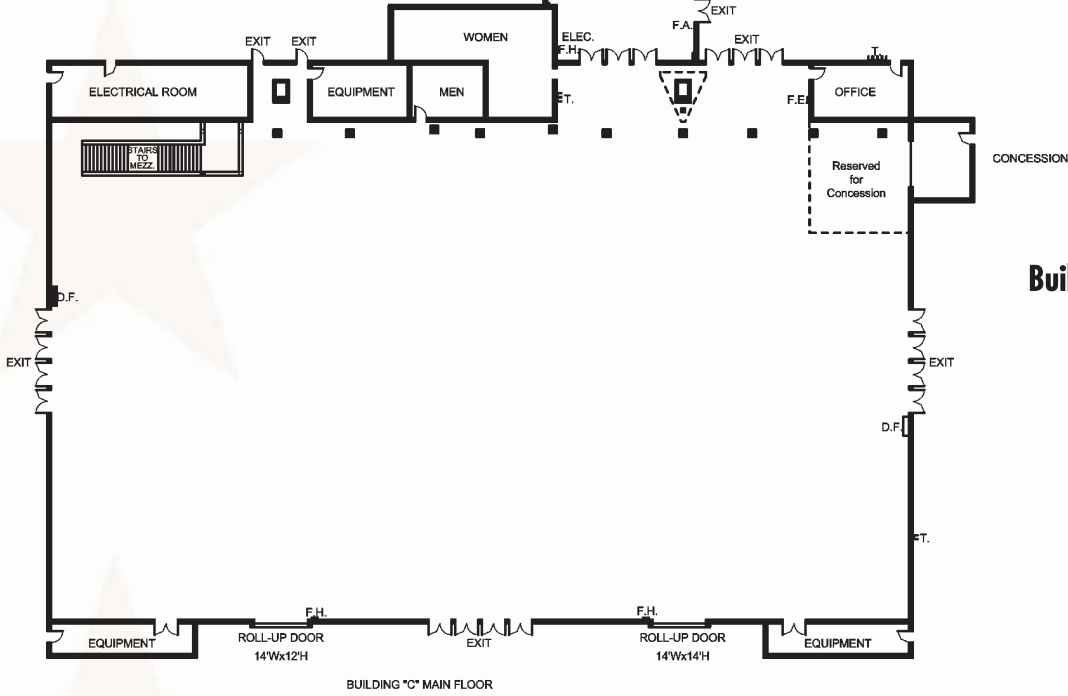
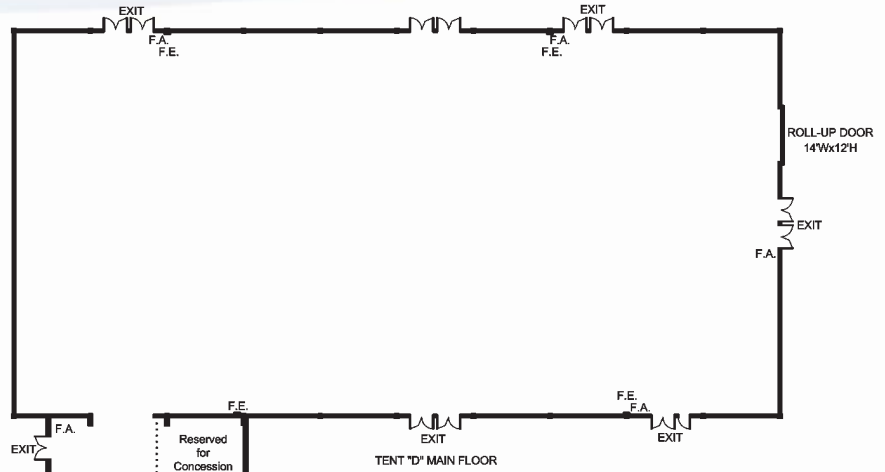
Square Footage	28,000
Main Floor Dimensions	224' L x 128' W Main Floor
8 x 10 Booths	160
10 x 10 Booths	130
Floor	Concrete
Power	120/208 - 3 phase 4 wire in floor trench and ceilings
Lights	Metal Halide main ceiling, florescent under mezzanine
Loading Access	Loading doors 13'11" W x 14'7" H and 13'11"W x 11'8" H
Loading Capacity	150 lbs./sq. ft. on pedestrian walkways and mezzanine levels
Permanent Concessions	Northeast corner of building
Restrooms	Lobby
Special Features	Show office with incoming phone line, house sound, public telephones indoors and out, air conditioning and heating
Ceiling	33' to ceiling supports, 10'4" under mezzanine

Building D

This 20,000-square-foot permanent fabric structure can be used in conjunction with Building C, for a total of 48,000 square feet. Featuring a permanent indoor walkway connecting the two buildings, heating/air conditioning, and a single roll-up door, Building D has served as an excellent venue for trade and consumer shows, conventions, and banquets, including the California State Fair Gala and the Fall RV Show. When used with Buildings A, B, and C, the total area available is 120,600 square feet of highly versatile space.

Square Footage	20,000
Main Floor Dimensions	99' L x 199' W
8 x 10 Booths	125
10 x 10 Booths	100
Floor	Asphalt and concrete
Power	120/208 - 3 phase 4 wire in floor trench and ceilings
Lights	Metal Halide main ceiling, florescent under mezzanine
Loading Access	Loading door 14'3" W x 15'H
Loading Capacity	150 lbs./sq. ft. on pedestrian walkways and mezzanine levels
Permanent Concessions	Northeast corner of Building C

Building D



Building C

- F.H. - FIRE HOSE
- F.E. - FIRE EXTINGUISHER
- T. - TELEPHONE
- D.F. - DRINKING FOUNTAIN

Rule

